



LAND BASED TRAINING
better skills, better jobs, better future

STAR, GATEWAY AND SHORT COURSES

FOR SECONDARY SCHOOLS



WHO ARE WE?

Land Based Training was incorporated on the 9th day of December 1996 and is registered as a PTE by NZQA under the provisions of the Education Act 1989 and its subsequent amendments.

We are an innovative provider with its head office based in Whanganui and branching out with courses and facilities throughout New Zealand.

Land Based Training is focused on quality and safety. Our Quality Management System (QMS) is based on NZQA's guidelines and policies for registration and accreditation.

Our Health and Safety Policy is managed by a committee, which meets regularly. Health and Safety is a key course component and staff are active in Land Based Training's health and safety programme.

If you would like to further discuss the best option for your school and students contact us today!

Phone: 0508 872 466
Email: info@landbasedtraining.co.nz
Visit: www.landbasedtraining.co.nz



PROVISO FOR DELIVERY AND ASSESSMENT

Accreditation and Registration of Unit Standards:

All unit standards to be registered with NZQA by the school. Land Based Training (LBT) needs to maintain moderation standards with the Primary ITO, therefore LBT is to mark all assessments for consistency and continuity.

Numbers: A maximum tutor to student ratio of 1:8 for farm courses is based on health and safety requirements.

Timing: Some courses can be delivered in school holidays to reduce loss of school class time.

Credit Value: Please note that one credit is equal to 10 notional hours of learning. Students may be asked to verify prior knowledge and / or experience for practical unit standards before assessment will take place. Some units may require an element of self-directed learning.

Vocational Pathways: You will find we have marked the unit standards which are aligned to the Primary Industries Vocational Pathway. These unit standards are recommended by the industries across our sector.

Quad Bikes and Tractors: Students for these courses must be over the age of 16. It must be noted that some students with little or no experience other than course time, may not reach competency for practical unit standards.

For STAR and Gateway, LBT will only offer level 1 Quad Bike and Tractor practical unit standards.

Chainsaw Safety: This 3-day course is a challenging programme for inexperienced students. Some sections are 'closed book' and those students with no previous chainsaw experience may not reach competency in the practical unit standard 6917 Operate a Chainsaw level 2, minimum age 16 years.

Prices: All prices are on application.

WHAT WE OFFER:

- » **STAR - AGRICULTURE**
- » **GATEWAY - AGRICULTURE**
- » **SHORT COURSES**
 - » **FENCING**
 - » **TRACTOR SAFETY**
 - » **QUAD BIKE SAFETY**
 - » **CHAINSAW SAFETY**
 - » **FOOD SAFETY**
 - » **FARM LIFE SKILLS**
 - » **LIVESTOCK HANDLING**
 - » **LEARNER CAR LICENCE**
 - » **HEALTH AND SAFETY**
- » **FARM SCHOOLS**



» STAR - AGRICULTURE

Purpose:

This is a popular choice with schools where a group of students are taken out of the school each week, for either a half or full day. This is an external programme where 100% of the course content is out of the school's grounds. There are some schools that have opted to have a classroom available and also allow some of the practical courses on the school grounds e.g. quad bikes.

Timeframe:

There are usually 32 weeks available in the curriculum, with most schools opting for a 30 week programme. Most schools allocate only one day per week but there is a trend towards two-day programmes, particularly for the transition students. The number of teaching weeks can be adjusted to suit the school timetable; this may affect how many units are achieved depending on the timeframe allowed.

Age: For quad courses students need to be at least 16 years of age.

STAR Agriculture Courses:

These may include 3 options: dairy, sheep or beef and their respective unit standards.

Students may take this course over two years working towards;

- » Year one introduction – Level 2
- » Year two - completion with certification

Level Three Credits:

Land Based Training can offer level three theory unit standards to qualifying students i.e. students who are currently involved with on-farm activities. All level three unit standards must be taught and assessed by LBT. A level three qualification can also be gained under 3+2 which is 3 days in school and 2 on farm.



Land Based Training Responsibilities:

1. Supply an industry-based tutor
2. Deliver unit standard associated material and administer assessments
3. Plan, book all sites and resource requirements
4. Supply and support moderation policy
5. Health and Safety of students while on course

School Responsibilities:

1. Supply the students as required
2. Supply all student travel arrangements. This cost may be met by the school or added onto the overall fee.
3. Register all unit standards with NZQA

» STAR - AGRICULTURE YEAR 1

(18 CREDITS)

Unit Standard	Descriptors	Level	Credit	Theory/ Practical	Vocational Pathway
19044	Describe the legal requirements and occupational hazards associated with tractor use	2	3	Theory	Yes
27608	Check and drive a basic wheel tractor under close supervision on flat terrain	1	3	Practical	
24577	Demonstrate knowledge of the safe operation of a Quad Bike	2	3	Theory	Yes
27602	Ride a quad bike on flat terrain under close supervision	1	3	Practical	Yes
19116	Demonstrate knowledge of livestock behavior and animal welfare	2	2	Theory	Yes
19145	Describe hydration, nutrition, and sleep in relation to physical well-being of agriculture workers	2	4	Theory	Yes



» STAR - AGRICULTURE YEAR 2 - DAIRY OPTION

(23 CREDITS)

Unit Standard	Descriptors	Level	Credit	Theory/ Practical	Vocational Pathway
24836	Describe non-electric fences, fence support materials, and safe practices in fencing	2	2	Theory	Yes
24833	Identify and maintain fencing tools and equipment, and identify fencing construction materials and wire types	2	3	Practical	Yes
24834	Replace a broken post, and repair a broken wire in fences	2	5	Practical	Yes
26417	Assist with handling cattle in yards	2	2	Practical	Yes
24623	Demonstrate knowledge of breeds and classes of cattle, and identification and records for cattle	2	2	Theory	Yes
18191	Demonstrate knowledge of safe handling and health problems of dairy cattle, associated with milking	2	3	Theory	Yes
18193	Demonstrate knowledge of farm dairy design, and the effluent system	2	2	Theory	Yes
18192	Demonstrate knowledge of how cows produce milk	2	2	Theory	Yes
561	Install, dismantle, and store temporary electric fences	2	2	Practical	Yes



» STAR - AGRICULTURE YEAR 2 - SHEEP OPTION

(20 CREDITS)

Unit Standard	Descriptors	Level	Credit	Theory/ Practical	Vocational Pathway
19106	Assist with handling livestock when moving and drafting, and when livestock are distressed	2	4	Practical	Yes
24834	Replace a broken post, and repair a broken wire in fences	2	5	Practical	Yes
24641	Demonstrate knowledge of features, attributes, identification, and records for sheep	2	2	Theory	Yes
19147	Describe the activities and hazards in a wool shed during shearing from a farm perspective	2	2	Theory	Yes
24836	Describe non-electric fences, fence support materials, and safe practices in fencing	2	2	Theory	Yes
30211	Dag and ring crutch sheep with prepared equipment	2	5	Practical	Yes



» GATEWAY - AGRICULTURE

It is understood that Gateway students are placed with a sponsor farmer (sponsors are to be sourced by the school) for two days per week for 30 weeks incorporating practical unit standards. This may involve: fencing, quad bikes, milking, tractors, stock handling, etc.

Some Gateway students attend class with other Land Based Training students at one of our training sites completing theory unit standards – some of these unit standards are prerequisites to the practical unit standards.

Credits from unit standards go towards the National Certificate in Agriculture (Introductory Skills). Once students have left school they can enrol with Land Based Training, complete this qualification and go on to Level 3.

Schools are responsible for:

- » Designing workplace learning programmes for students
- » Overseeing the learning opportunities and assessment once they are set up
- » Programme Administration
- » Liaise with participating employers and Industry Training Organisations
- » Ensuring students keep a daily diary of their activities while out in farms. These will all be part of assessment

Land Based Training's responsibilities are:

- » Support the student
- » Mark the assessments
- » Report to the school
- » Visit the student at the sponsor farm and carry out the practical assessments
- » Check on diary entries

Land Based Training can offer classes to support theory learning if required.

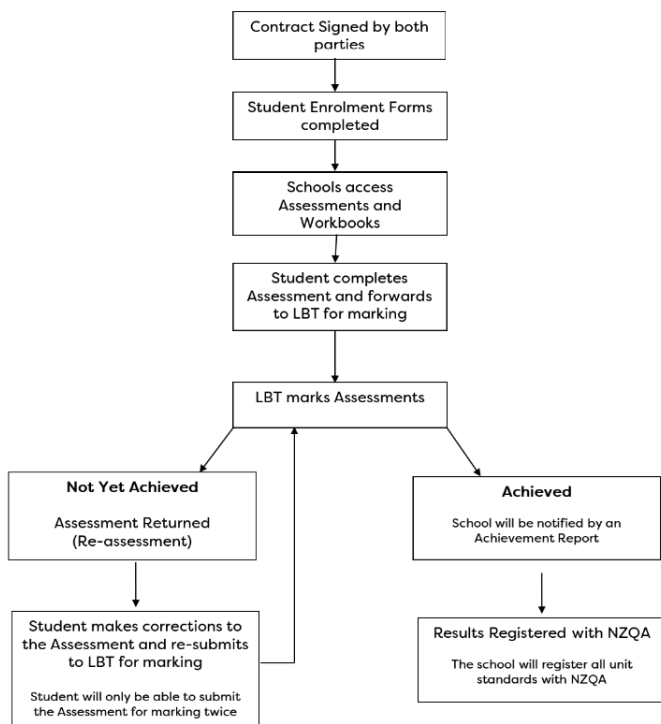


» GATEWAY PROCESS

Land Based Training provides Gateway Agriculture Students with workbooks and assessments. Schools will be given access to the Gateway unit standards for a one year period.

Module options for gateway students include; Sheep, Beef, Dairy, General Agriculture. These four teaching options give the student the opportunity to choose the area of agricultural interest most relevant to them.

» MARKING PROCESS



» GATEWAY - AGRICULTURE - GENERAL

(23 CREDITS)

Unit Standard	Descriptors	Level	Credit	Theory/ Practical	Vocational Pathway
27608	Drive a basic wheel tractor on flat terrain under close supervision	1	3	Practical	
27602	Ride a quad bike on flat terrain under close supervision	1	3	Practical	Yes
19044	Describe the legal requirements and occupational hazards associated with tractor use	2	3	Theory	Yes
24557	Demonstrate knowledge of the safe operation of a quad bike	2	3	Theory	Yes
19114	Assist with handling and treatment of livestock	2	6	Practical	Yes
24833	Identify and maintain fencing tools and equipment, and identify fencing construction materials and wire types	2	3	Theory + Practical	Yes
21556	Control weeds under supervision	2	2	Practical	Yes

» GATEWAY - AGRICULTURE - DAIRY

(22 CREDITS)

Unit Standard	Descriptors	Level	Credit	Theory/ Practical	Vocational Pathway
27608	Drive a basic wheel tractor on flat terrain under close supervision	1	3	Practical	
27602	Ride a quad bike on flat terrain under close supervision	1	3	Practical	Yes
19044	Describe the legal requirements and occupational hazards associated with tractor use	2	3	Theory	Yes
24557	Demonstrate knowledge of the safe operation of a quad bike	2	3	Theory	Yes
24548	Assist with milking	2	8	Practical	Yes
561	Install, dismantle, and store temporary electric fences	2	2	Practical	Yes

» GATEWAY - AGRICULTURE - SHEEP

(25 CREDITS)

Unit Standard	Descriptors	Level	Credit	Theory/ Practical	Vocational Pathway
27608	Drive a basic wheel tractor on flat terrain under close supervision	1	3	Practical	
27602	Ride a quad bike on flat terrain under close supervision	1	3	Practical	Yes
19044	Describe the legal requirements and occupational hazards associated with tractor use	2	3	Theory	Yes
24557	Demonstrate knowledge of the safe operation of a quad bike	2	3	Theory	Yes
19114	Assist with handling and treatment of livestock	2	6	Practical	Yes
19152	Assist with preparation and handling of lambs for docking	2	2	Practical	Yes
30211	Dag and ring crutch sheep with prepared equipment	2	5	Practical	Yes



» GATEWAY - AGRICULTURE - CATTLE

(26 CREDITS)

Unit Standard	Descriptors	Level	Credit	Theory/ Practical	Vocational Pathway
27608	Drive a basic wheel tractor on flat terrain under close supervision	1	3	Practical	
27602	Ride a quad bike on flat terrain under close supervision	1	3	Practical	Yes
19044	Describe the legal requirements and occupational hazards associated with tractor use	2	3	Theory	Yes
24557	Demonstrate knowledge of the safe operation of a quad bike	2	3	Theory	Yes
19114	Assist with handling and treatment of livestock	2	6	Practical	Yes
19106	Assist with handling livestock when moving and drafting, and when livestock are distressed	2	4	Practical	Yes
26417	Assist with handling cattle in yards	2	2	Practical	
561	Install, dismantle, and store temporary electric fences	2	2	Practical	Yes



» AGRICULTURE - LEVEL 3

(22 CREDITS)

Agriculture Level 3 is a programme for students who have a working knowledge of farming. A student will be asked to justify their level of farming knowledge and ability before access to these units is granted. LBT will need to be able to contact the farmers who are working with these students to discuss their level of ability.

Schools can apply for individual students to have access to the units listed below and will be charged on a per credit basis in advance.

There will be a 2 week period for marking and then, if necessary, we will return the unit for a second and final attempt. Students may have 2 attempts to achieve the unit. LBT will report officially to the school all achieved units. The school is responsible for reporting achieved units to NZQA on receipt of the official form from LBT.

Unit Standard	Descriptors	Level	Credit	Theory/ Practical
24837	Describe non-electric fence types and components	3	3	Theory
23542	Identify factors, and describe how to manage factors, that contribute to injury in a rural workplace	3	4	Theory
18	Demonstrate knowledge of animal anatomy and physiology	3	4	Theory
19111	Demonstrate knowledge of the types, breeds, uses, and health requirements of farm dogs	3	4	Theory
19075	Demonstrate knowledge of calving and associated diseases and health disorders	3	3	Theory
19149	Describe lambing and the procedures for assisting ewes having difficulty lambing	3	4	Theory



» SHORT COURSES

Land Based Training offers several exciting short courses. We have listed in this booklet our most popular courses; please contact us if you would like to see other options as we can tailor courses to meet your student needs.

Land Based Training also offer agriculture taster courses which are popular with Year 10 and Year 11 students in the fourth term. This is a great way for students to get interested in agriculture and then join a STAR class in Year 12 & 13.

Land Based Training Responsibilities:

1. Supply an industry-based tutor
2. Deliver to unit standard competency
3. Plan and book all sites, stock and tool requirements

School Responsibilities:

1. Ensure the minimum number of students attend. (joint school ventures are acceptable)
2. Provide all student travel arrangements to and from practical venues
3. Register all unit standards with NZQA

Minimum Numbers:

Short courses are based on a minimum of 8 students.

Short Course Cancellation Policy:

If the course is cancelled less than 72 hours before the designated day, you will still be invoiced 50% of the agreed contract price.



» FENCING

2 Days

Unit Standard	Descriptors	Level	Credit	Theory/ Practical	Vocational Pathway
24836	Describe non-electric fences, fence support materials, and safe practices in fencing	2	2	Theory	Yes
561	Install, dismantle, and store temporary electric fences	2	2	Practical	Yes

» TRACTOR SAFETY

3 Days - must be 16 years of age

Unit Standard	Descriptors	Level	Credit	Theory/ Practical	Vocational Pathway
19044	Describe the legal requirements and occupational hazards associated with tractor use	2	3	Theory	Yes
27608	Check and drive a basic wheel tractor on flat terrain under close supervision	1	3	Practical	Yes

» QUAD BIKE SAFETY

3 Days - must be 16 years of age

Unit Standard	Descriptors	Level	Credit	Theory/ Practical	Vocational Pathway
24557	Demonstrate knowledge of the safe operation of a quad bike	2	3	Theory	Yes
27602	Ride a quad bike on flat terrain under close supervision	1	3	Practical	Yes



» CHAINSAW SAFETY

3 Days - must be 16 years of age

Unit Standard	Descriptors	Level	Credit	Theory/ Practical	Vocational Pathway
6917	Operate a chainsaw	2	12	Theory + Practical	

» FOOD SAFETY

1.5 Days

Unit Standard	Descriptors	Level	Credit	Theory/ Practical	Vocational Pathway
167	Practise food safety methods in a food business under supervision	4	2	Theory + Practical	

» FARM LIFE SKILLS

2 Days

Unit Standard	Descriptors	Level	Credit	Theory/ Practical	Vocational Pathway
19137	Describe the opportunities, advantages, and disadvantages of rural employment	1	2	Theory	Yes
19145	Describe hydration, nutrition, and sleep in relation to physical well-being of agriculture workers	2	4	Theory	Yes

» LIVESTOCK

2 Days

Unit Standard	Descriptors	Level	Credit	Theory/ Practical	Vocational Pathway
24623 or 24641	Demonstrate knowledge of breeds and classes of cattle and identification records for cattle. Demonstrate knowledge of features, attributes and records for sheep.	2	4	Theory	Yes
19116	Demonstrate knowledge of livestock behaviour and animal welfare	2	2	Theory	Yes

» LEARNER LICENCE

Course Objective: Students credited with this unit standard can describe the legal responsibilities of a driver, and legal requirements for driving on the road in relation to other road users. This course consists of 1 ½ days of classroom theory training.

Pre-entry: Minimum 16 years of age

Course Numbers: Minimum 8 students

Unit Standard	Descriptors	Level	Credit	Theory/ Practical	Vocational Pathway
3462	Demonstrate knowledge of traffic law for the purpose of safe driving	2	3	Theory	Yes

- » Each student will receive a set of L Plates
- » Please note: Students will need to book & pay the New Zealand Transport Agency Licence fee

» HEALTH AND SAFETY

1 Day

All students before they enter the workplace under Gateway require Unit Standard 497. Land Based Training can offer students this course as a one day intensive course delivered on site at your school.

Course Numbers: 10-15 Students

Unit Standard	Descriptors	Level	Credit	Theory/ Practical	Vocational Pathway
497	Demonstrate knowledge of workplace health and safety requirements	1	3	Theory	Yes



» LAND BASED TRAINING FARM SCHOOLS



» TE RUA O TE MOKO LTD

This exciting course is designed to give you an opportunity to enhance your skills and knowledge to start a successful dairy career.

Te Rua O Te Moko Ltd is a dairy enterprise located near Normanby in the Taranaki Region. The dairy platform is comprised of the amalgamation of five separate blocks with a total farmable area of 180 hectares.

The entity is currently farmed under a 50:50 share milker agreement and milks around 500 cows, producing 180,000 milk solids.





» OTIWHITI STATION

Otiwhiti Station is a historic and iconic large scale sheep and cattle breeding property located in the Hunterville district.

The Agricultural School is in its eleventh year and has gained a reputation for educating and training students both in theory and practical aspects of farming. Cadets have proven to be well skilled, employable and valuable shepherds in the Hunterville region and surrounding hill country. Testimony to their value is the willingness of the farming community to compete for employment of these students.

The total area of Otiwhiti Station is 3350 hectares and has now been purchased by two parts of the Duncan Family. The station buildings include the homestead, manager's residence, shepherd's residence, cookhouse and single shepherds' quarters.

LBT and The Duncan Land Company feel privileged to be able to offer this opportunity to potential students.

Developing skills and knowledge and being recognised for that through a qualification is an important part of life today. Being involved in the sheep and beef industry is a positive step in student's career pathway. Cadets will gain the New Zealand Certificate in Agriculture Level 3. Otiwhiti Agricultural School takes between 10 and 16 cadets each year.





LAND BASED TRAINING

better skills, better jobs, better future

CONTACT US:

0508 872 4663

info@landbasedtraining.co.nz

