



# **LAND BASED TRAINING**

*better skills, better jobs, better future*

# **2021**

**STAR, GATEWAY & SHORT COURSES**

**For**

**SECONDARY  
SCHOOLS**



**0508 872 466**

**[www.landbasedtraining.co.nz](http://www.landbasedtraining.co.nz)**

**Akomarga O Te Whanua  
NZQA Accredited Provider**





# LAND BASED TRAINING

*better skills, better jobs, better future*

## CONTENTS

	PAGE
Land Based Training Details	3
Proviso for Unit Standard Delivery and Assessment	4
<b>STAR &amp; GATEWAY PROGRAMMES</b>	
STAR Courses - Agriculture	5
Gateway Courses - Agriculture	8
<b>SHORT COURSE OPTIONS</b>	
Short Course Policies	13
Agriculture	14
Learner Car Licence Course	16
Health & Safety	16
<b>TERTIARY OPTIONS</b>	
Land Based Training Farm Schools	17

**TASTER VISITS**  
19

**DAYS AND FARM**



# LAND BASED TRAINING

*better skills, better jobs, better future*

Land Based Training was incorporated on the 9<sup>th</sup> day of December 1996 and is registered as a private training establishment by the New Zealand Qualifications Authority (NZQA) under the provisions of the Education Act 1989 and its subsequent amendments.

Land Based Training is an innovative Tertiary Education Provider with its head office based in Wanganui and branching out with courses and facilities throughout the North Island of New Zealand.

**Accreditation:**

Land Based Training is nationally accredited to teach New Zealand Qualifications Authority unit standards of learning in Agriculture up to and including level 5 and Level 6 units in production and agribusiness management. Also a range of Horticulture, Apiculture, Pest Control Civil Construction, Building, Occupational Health and Safety, Customer Service, Road Transport, & Forestry units.

**Quality:**

Land Based Training is focused on quality and safety. Our Quality Management System (QMS) is based on the NZQA's guidelines and polices for registration and accreditation.

Land Based Training is a Category Two provider with NZQA gaining **Confident in Educational Achievement** and **Confident in Self Assessment**.

Our Health and Safety Policy is managed by a committee, which meets regularly. Health and Safety is a key course component and staff are active in Land Based Training's health and safety programme.

If you would like to discuss options for your school which are not featured in this booklet, please contact  
Land Based Training.

Phone: 0508 872 466  
Email: [info@landbasedtraining.co.nz](mailto:info@landbasedtraining.co.nz)  
Visit: [www.landbasedtraining.co.nz](http://www.landbasedtraining.co.nz)

## **Proviso for Unit Standard Delivery & Assessment:**

### **Accreditation and Registration of Unit Standards:**

All unit standards to be registered with NZQA by the school. Land Based Training needs to maintain moderation standards with the Primary ITO, therefore Land Based Training is to mark all assessments for consistency and continuity.

### **Numbers:**

A maximum tutor to student ratio of 1:8 for farm courses is based on health and safety requirements.

### **Timing:**

Some courses can be delivered in school holidays to reduce loss of school class time.

### **Credit Value:**

Please note that one credit is equal to 10 notional hours of learning. Students may be asked to verify prior knowledge and / or experience for practical unit standards before assessment will take place. Some units may require an element of self-directed learning.

### **Vocational Pathways:**

You will find we have marked the unit standards which are aligned to the Primary Industries Vocational Pathway. These unit standards are recommended by the industries across our sector.

### **Quad Bikes and Tractors:**

#### **Students for these courses must be over the age of 16.**

It must be noted that some students with little or no experience other than course time, may not reach competency for practical unit standards.

For STAR and Gateway, Land Based Training will only offer level 1 Quad Bike and Tractor practical unit standards.

### **Chainsaw Safety:**

This 3-day course is a challenging programme for inexperienced students. Some sections are 'closed book' and those students with no previous chainsaw experience may not reach competency in the practical unit standard 6917 Operate a Chainsaw level 2, minimum age 16 years.

### **Prices:**

All prices are on application.

# STAR Agriculture Courses

## **Purpose:**

This is a popular choice with schools where a group of students are taken out of the school each week, for either a half or full day. This is an external programme where 100% of the course content is out of the school's grounds. There are some schools that have opted to have a classroom available and also allow some of the practical courses on the school grounds e.g. quad bikes.

## **Timeframe:**

There are usually 32 weeks available in the curriculum, with most schools opting for a 30 week programme. Most schools allocate only one day per week but there is a trend towards two-day programmes, particularly for the transition students. The number of teaching weeks can be adjusted to suit the school timetable; this may affect how many units are achieved depending on the timeframe allowed.

Age: For quad courses students need to be at least 16 years of age.

## **STAR Agriculture Courses:**

These may include 3 options: dairy, sheep or beef and their respective unit standards. Students may take this course over two years working towards;

- Year one Introduction - Level 2
- Year two completion with certification

## **Level Three Credits:**

Land Based Training can offer level three theory unit standards to qualifying students i.e. students who are currently involved with on-farm activities. All level three unit standards must be taught and assessed by Land Based Training. A level three qualification can also be gained under 3+2.

## **Maximum Student Numbers:**

Land Based Training recommends a maximum number of students per course is 10. This is to meet health and safety policy requirements and also fits well with van transport to practical facilities. Minimum of 8 students apply.

## **Land Based Training Responsibilities:**

1. Supply an industry-based tutor
2. Deliver unit standard associated material and administer assessments
3. Plan, book all sites and resource requirements
4. Supply and support moderation policy
5. Health and Safety of students while on course

## **School Responsibilities:**

1. Supply the students as required
2. Supply all student travel arrangements. This cost may be met by the school or added onto the overall fee.
3. Register all unit standards with NZQA



## Agriculture STAR Year 1 (Total 27 credits)

Unit Standard	Descriptor	Version	Level	Credit	Theory / Practical	Vocational Pathway
19044	Describe the legal requirements and occupational hazards associated with tractor use	3	2	3	T	✓
27608	Check and drive a basic wheel tractor under close supervision on flat terrain	1	1	3	P	
24557	Demonstrate knowledge of the safe operation of a Quad Bike	4	2	3	T	✓
27602	Ride a quad bike on flat terrain under close supervision	1	1	3	P	✓
19116	Demonstrate knowledge of livestock behavior and animal welfare	4	2	2	T	✓
23540	Demonstrate knowledge of hazards, hazard control and the consequences of injury in a rural workplace	2	2	5	T	✓
19145	Describe hydration, nutrition, and sleep in relation to physical well-being of agriculture workers	3	2	4	T	✓
19112	Check and report on livestock	3	2	4	P	✓

## Agriculture STAR Year 2 - Dairy Option (Total 26 credits)

Unit Standard	Descriptor	Version	Level	Credit	Theory/ Practical	Vocational Pathway
24836	Describe non-electric fences, fence support materials, and safe practices in fencing	3	2	2	T	✓
24833	Identify and maintain fencing tools and equipment, and identify fencing construction materials and wire types	2	2	3	P	✓
24835	Identify the location of a fault in electric fences, and replace electric fence components	1	2	3	P	✓
24834	Replace a broken post, and repair a broken wire in fences	2	2	5	P	✓
26417	Assist with handling cattle in yards	2	2	2	P	✓
24623	Demonstrate knowledge of breeds and classes of cattle, and identification and records for cattle	2	2	2	T	✓
18191	Demonstrate knowledge of safe handling and health problems of dairy cattle, associated with milking	4	2	3	T	✓
18193	Demonstrate knowledge of farm dairy design, and the effluent system	4	2	2	T	✓
18192	Demonstrate knowledge of how cows produce milk	4	2	2	T	✓
561	Install, dismantle, and store temporary electric fences	5	2	2	P	✓

## Agriculture STAR Year 2 - Sheep Option *(Total 28 credits)*

Unit Standard	Descriptor	Version	Level	Credit	Theory / Practical	Vocational Pathway
19106	Assist with handling livestock when moving and drafting, and when livestock are distressed	3	2	4	P	✓
24833	Identify and maintain fencing tools and equipment, and identify fencing construction materials and wire types	2	2	3	P	✓
24832	Open and draw out a coil of wire, tie knots, join wire, and prepare wire for transport and storage	2	2	5	p	✓
24834	Replace a broken post, and repair a broken wire in fences	2	2	5	P	✓
577	Dag and crutch sheep by machine with prepared equipment	6	2	5	P	✓
24641	Demonstrate knowledge of features, attributes, identification, and records for sheep	1	2	2	T	✓
19147	Describe the activities and hazards in a wool shed during shearing from a farm perspective	3	2	2	T	✓
24836	Describe non-electric fences, fence support materials, and safe practices in fencing	3	2	2	T	✓

## Agriculture STAR - Level 3 *(Total 15 credits)*

Unit Standard	Descriptor	Version	Level	Credit	Theory / Practical	Vocational Pathway
24837	Describe non-electric fence types and components	1	3	3	T	✓
23542	Identify factors, and describe how to manage factors, that contribute to injury in a rural workplace	1	3	4	T	✓
18	Demonstrate knowledge of animal anatomy and physiology	6	3	4	T	✓
19111	Demonstrate knowledge of the types, breeds, uses, and health requirements of farm dogs	2	3	4	T	✓



# Agriculture Gateway Courses

It is understood that Gateway students are placed with a sponsor farmer (sponsors are to be sourced by the school) for **two days per week for 30 weeks** incorporating practical unit standards. This may involve: fencing, quad bikes, milking, tractors, stock handling, etc.

Some Gateway students attend class with other Land Based Training students at one of our training sites completing theory unit standards - some of these unit standards are prerequisites to the practical unit standards.

Credits from unit standards go towards the National Certificate in Agriculture (Introductory Skills). Once students have left school they can enrol with Land Based Training, complete this qualification and go on to Level 3.

Schools are responsible for:

- Designing workplace learning programmes for students
- Overseeing the learning opportunities and assessment once they are set up
- Programme Administration
- Liaise with participating employers and Industry Training Organisations
- Ensuring students keep a daily diary of their activities while out in farms. These will all be part of assessment

## **Gateway Process:**

Land Based Training provides Gateway Agriculture Students with workbooks and assessments.

Schools will be given access to the Gateway unit standards for a one year period.

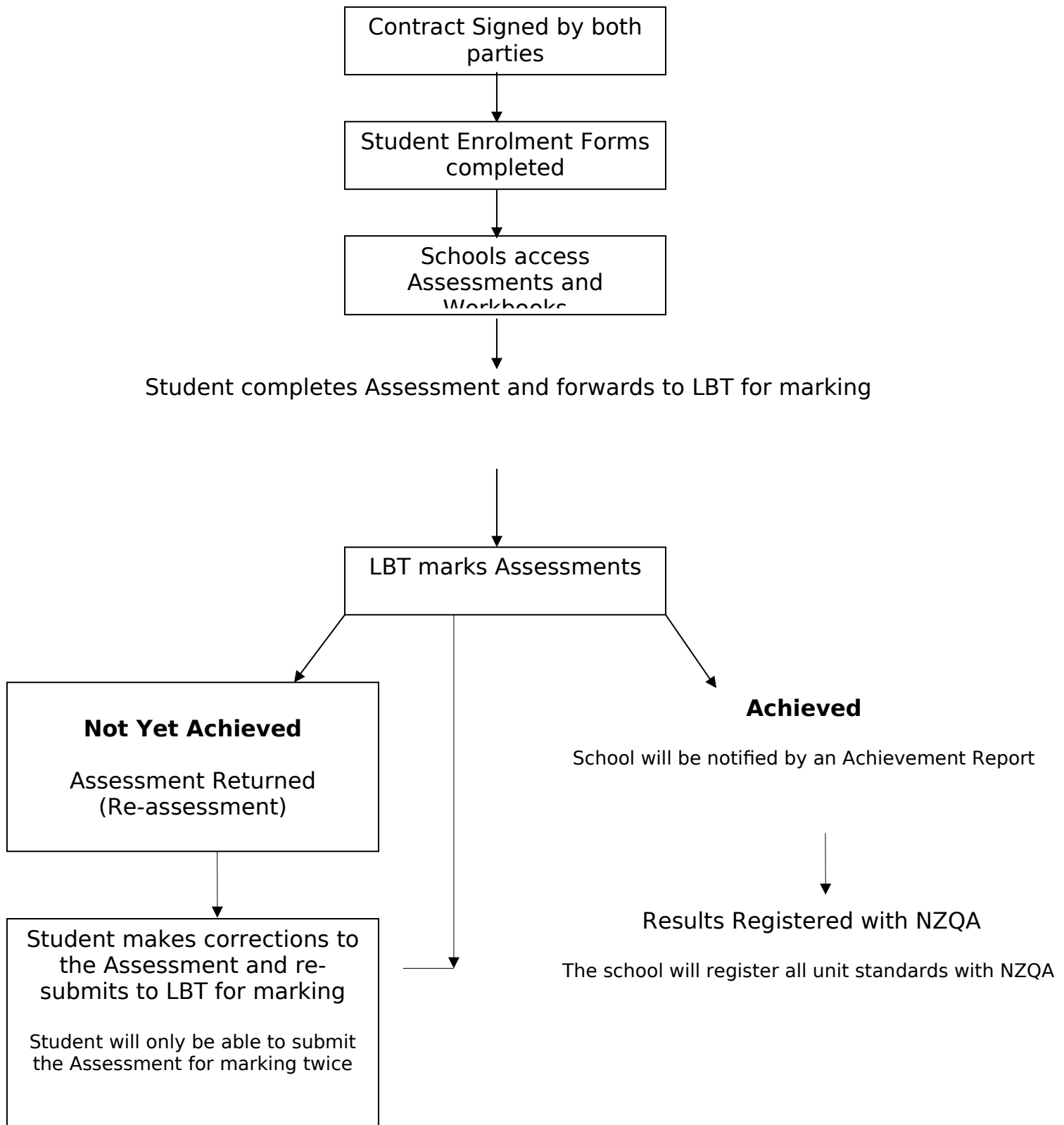
Module options for gateway students include; Sheep, Beef, Dairy, General Agriculture. These four teaching options give the student the opportunity to choose the area of agricultural interest most relevant to them. An annual licence fee applies.

Land Based Training's responsibilities are:

- Support the student
- Mark the assessments
- Report to the school
- Visit the student at the sponsor farm and carry out the practical assessments
- Check on diary entries

Land Based Training can offer classes to support theory learning if required.

# Gateway Marking Process



## Agriculture Gateway - General (Total 33 credits)

Unit Standard	Descriptor	Version	Level	Credit	Theory / Practical	Vocational Pathways
23541	Locate hazards, describe safety procedures, and demonstrate safe work practices in a rural workplace	3	2	5	p	✓
27608	Drive a basic wheel tractor on flat terrain under close supervision	1	1	3	p	
27602	Ride a quad bike on flat terrain under close supervision	1	1	3	P	✓
19044	Describe the legal requirements and occupational hazards associated with tractor use	3	2	3	T	✓
24557	Demonstrate knowledge of the safe operation of a quad bike	4	2	3	T	✓
19114	Assist with handling and treatment of livestock	3	2	6	P	✓
24833	Identify and maintain fencing tools and equipment, and identify fencing construction materials and wire types	2	2	3	T/P	✓
21556	Control weeds under supervision	3	2	2	P	✓
24832	Open and draw out a coil wire, tie knots, join wire, and prepare wire for transport and storage	2	2	5	P	✓

## Agriculture Gateway - Dairy (Total 33 credits)

Unit Standard	Descriptor	Version	Level	Credit	Theory / Practical	Vocational Pathways
23541	Locate hazards, describe safety procedures, and demonstrate safe work practices in a rural workplace	2	2	5	P	✓
24548	Assist with milking	2	2	8	P	✓
19044	Describe the legal requirements and occupational hazards associated with tractor use	3	2	3	T	✓
27608	Drive a basic wheel tractor on flat terrain under close supervision	1	1	3	P	
24557	Demonstrate knowledge of the safe operation of a quad bike	4	2	3	T	✓
27602	Ride a quad bike on flat terrain under close supervision	1	1	3	P	✓
19114	Assist with handling and treatment of livestock	3	2	6	P	✓
561	Install, dismantle, and store temporary electric fences	5	2	2	P	✓

## Agriculture Gateway - Sheep (Total 34 credits)

Unit Standard	Descriptor	Version	Level	Credit	Theory / Practical	Vocational Pathways
23541	Locate hazards, describe safety procedures, and demonstrate safe work practices in a rural workplace	2	2	5	P	✓
19044	Describe the legal requirements and occupational hazards associated with tractor use	3	2	3	T	✓
27608	Drive a basic wheel tractor on flat terrain under close supervision	1	1	3	P	
24557	Demonstrate knowledge of the safe operation of a quad bike	4	2	3	T	✓
27602	Ride a quad bike on flat terrain under close supervision	1	1	3	P	✓
19152	Assist with preparation and handling of lambs for docking	3	2	2	P	✓
19114	Assist with handling and treatment of livestock	3	2	6	P	✓
19112	Check and report on livestock	3	2	4	P	✓
19146	Carry out wool shed tasks during shearing operations	3	2	5	P	✓

## Agriculture Gateway - Cattle (Total 35 credits)

Unit Standard	Descriptor	Version	Level	Credit	Theory / Practical	Vocational Pathways
23541	Locate hazards, describe safety procedures, and demonstrate safe work practices in a rural workplace	2	2	5	P	✓
27608	Drive a basic wheel tractor on flat terrain under close supervision	1	1	3	P	
19044	Describe the legal requirements and occupational hazards associated with tractor use	3	2	3	T	✓
24557	Demonstrate knowledge of the safe operation of a quad bike	4	2	3	T	✓
27602	Ride a quad bike on flat terrain under close supervision	1	1	3	P	✓
19112	Check and report on livestock	3	2	4	P	✓
19114	Assist with handling and treatment of livestock	3	2	6	P	✓
19106	Assist with handling livestock when moving and drafting, and when livestock are distressed	3	2	4	P	✓
26417	Assist with handling cattle in yards	2	2	2	P	
561	Install, dismantle, and store temporary electric fences	5	2	2	P	✓

## Gateway - Level 3 (*Total credits 22*)

Agriculture Level 3 is a programme for students who have a working knowledge of farming. A student will be asked to justify their level of farming knowledge and ability before access to these units is granted. Land Based Training will need to be able to contact the farmers who are working with these students to discuss their level of ability.

Schools can apply for individual students to have access to the units listed below and will be charged on a per credit basis in advance.

A flow chart explaining the marking process for these units is on page 8. Students should complete the assessment under supervision and then send that assessment for marking to:

Land Based Training, PO Box 689, Wanganui 4541.

There will be a 2week period for marking and then, if necessary, we will return the unit for a second and final attempt. Students may have 2 attempts to achieve the unit. Land Based Training will report officially to the school all achieved units. The school is responsible for reporting achieved units to NZQA on receipt of the official form from Land Based Training.

Unit Standard	Descriptor	Version	Level	Credit	Theory / Practical
24837	Describe non-electric fence types and components	1	3	3	T
23542	Identify factors, and describe how to manage factors, that contribute to injury in a rural workplace	1	3	4	T
18	Demonstrate knowledge of animal anatomy and physiology	6	3	4	T
19111	Demonstrate knowledge of the types, breeds, uses, and health requirements of farm dogs	2	3	4	T
19075	Demonstrate knowledge of calving and associated diseases and health disorders	2	3	3	T
19149	Describe lambing and the procedures for assisting ewes having difficulty lambing	2	3	4	T

# **Short Course Policies**

Land Based Training offers several exciting short courses. We have listed in this booklet our most popular courses; please contact us if you would like to see other options as we can tailor courses to meet your student needs.

Land Based Training also offer agriculture taster courses which are popular with Year 10 and Year 11 students in the fourth term. This is a great way for students to get interested in agriculture and then join a STAR class in Year 12 & 13.

## **Land Based Training Responsibilities:**

1. Supply an industry-based tutor
2. Deliver to unit standard competency
3. Plan and book all sites, stock and tool requirements

## **School Responsibilities:**

1. Ensure the minimum number of students attend. (*joint school ventures are acceptable*)
2. Provide all student travel arrangements to and from practical venues
3. Register all unit standards with NZQA

## **Minimum Numbers:**

Short courses are based on a minimum of 8 students.

## **Short Course Cancellation Policy:**

If the course is cancelled less than 72 hours before the designated day, you will still be invoiced 50% of the agreed contract price.

# Agriculture Short Courses

## Course One - Fencing - 2 days

Unit Standard	Descriptor	Level	Credits	Theory/ Practical	Vocational Pathway
24836	Describe non-electric fences, fence support materials, and safe practices in fencing	2	2	T	✓
561	Install, dismantle, and store temporary electric fences	2	2	P	✓

## Course Two - Tractor Safety - 3 days - must be 16 yrs of age

Unit Standard	Descriptor	Level	Credits	Theory/ Practical	Vocational Pathway
19044	Describe the legal requirements and occupational hazards associated with tractor use	2	3	T	✓
27608	Check and drive a basic wheel tractor on flat terrain under close supervision	1	3	P	✓

## Course Three - Quad Bike Safety - 3 days - must be 16 yrs of age

Unit Standard	Descriptor	Level	Credits	Theory/ Practical	Vocational Pathway
24557	Demonstrate knowledge of the safe operation of a quad bike	2	3	T	✓
27602	Ride a quad bike on flat terrain under close supervision	1	3	P	✓

## Course Four - Chainsaw Safety - 3 days - must be 16 yrs of age

Unit Standard	Descriptor	Level	Credits	Theory/ Practical	Vocational Pathway
6916	Demonstrate knowledge of the Approved Code of Practice relating to chainsaw use	2	5	T	
6917	Operate a chainsaw	2	8	P	

## Course Five - Health and Safety on Farm - 2 days

Unit Standard	Descriptor	Level	Credits	Theory/ Practical	Vocational Pathway
23540	Demonstrate knowledge of hazards, hazard control, and the consequences of injury in a rural workplace	2	5	T	✓

## Course Six - Farm Life Skills - 2 days

Unit Standard	Descriptor	Level	Credits	Theory/ Practical	Vocational Pathway
19137	Describe the opportunities, advantages, and disadvantages of rural employment	1	2	T	✓
19145	Describe hydration, nutrition, and sleep in relation to physical well-being of agriculture workers	2	4	T	✓

## Course Seven - Livestock Handling - 2 days

Unit Standard	Descriptor	Level	Credits	Theory/ Practical	Vocational Pathway
24623 or 24641	Demonstrate knowledge of breeds and classes of cattle and identification records for cattle Demonstrate knowledge of features, attributes and records for sheep	2	4	T	✓
19116	Demonstrate knowledge of livestock behaviour and animal welfare	2	2	T	✓



# Learner Car Licence Course

## **Course Objective:**

Students credited with this unit standard can describe the legal responsibilities of a driver, and legal requirements for driving on the road in relation to other road users. This course consists of 1 ½ days of classroom theory training.

## **Pre-entry:**

Minimum 16 years of age

## **Course Numbers:**

Minimum 8 students

## **NZQA Unit Standards:**

Unit Standard	Descriptor	Level	Credits	Theory/ Practical	Vocational Pathway
3462	Demonstrate knowledge of traffic law for the purpose of safe driving	2	3	T	✓

Each student will receive a set of L Plates

*Please note: Students will need to book & pay the New Zealand Transport Agency Licence fee.*

# Health and Safety

## **Unit Standard 497**

All students before they enter the workplace under Gateway require Unit Standard 497. Land Based Training can offer students this course as a one day intensive course delivered on site at your school.

- 10-15 students
- 1 Day course

Unit Standard	Descriptor	Level	Credits	Theory/ Practical	Vocational Pathway
497	Demonstrate knowledge of workplace health and safety requirements	1	3	T	✓

# Tertiary Options

## Land Based Training Farm Schools

### Otiwhiti Station:

Otiwhiti Station is a historic and iconic large scale sheep and cattle breeding property located in the Hunterville district, Rangitikei.



The Agricultural School is in its eleventh year and has gained a reputation for educating and training students both in theory and practical aspects of farming. Cadets have proven to be well skilled, employable and valuable shepherds in the Hunterville region and surrounding hill country. Testimony to their value is the willingness of the farming community to compete for employment of these students.

The total area of Otiwhiti Station is 3350 hectares and has now been purchased by two parts of the Duncan

Family. The station buildings include the homestead, manager's residence, shepherd's residence, cookhouse and single shepherds' quarters.

Land Based Training and The Duncan Land Company feel privileged to be able to offer this opportunity to potential students.

Developing skills and knowledge and being recognised for that through a qualification is an important part of life today. Being involved in the sheep and beef industry is a positive step in student's career pathway. Cadets will gain the New Zealand Certificate in Agriculture Level 3. Otiwhiti Agricultural School takes between 10 and 16 cadets each year

### Te Rua O Te Moko Farm School:

This exciting course is designed to give you an opportunity to enhance your skills and knowledge to start a successful dairy career.



Te Rua O Te Moko Ltd is a dairy enterprise located near Normanby in the Taranaki Region. The dairy platform is comprised of the amalgamation of five separate blocks with a total farmable area of

180 hectares. The entity is currently farmed under a 50:50 share milker agreement and milks around 500 cows, producing 180,000 milk solids.



## **Awhiwhenua Farm School:**

Atihau Whanganui Incorporation and Te Ati Hau Trust have made a commitment to support Land Based Training in delivering a level three NZQA accredited course. The practical training properties and theory base for this course is to be held in Karioi at Ngā Mōkai Marae 20km southeast of Ohakune SH4 between Ohakune and Waiouru.

The properties involved with the course have different individual challenges. Having three properties will support the student to identify a standard upheld in the Agricultural sector.

The AWHIWHENUA Land Based Training Course has access to the Karioi property of Ngā Mōkai Marae, and facilities to enhance and teach hill country sheep and cattle skills to a select group of trainees per year. Land Based Training offers the educational backup and teaching to ensure quality tuition is passed on to the fortunate selected students.

A new residence was opened in 2017 for students

**Entry criteria and course fees apply to all the LBT Farm Training Schools  
Year 13 school leavers are encouraged to apply  
View all courses on our website**

**[www.landbasedtraining.co.nz](http://www.landbasedtraining.co.nz)**



  
**LAND BASED TRAINING**

### **Youth Guarantee Courses**

*(16 to 19 years of age)*

- Vocational Pathways – Primary Industry, level 2
- Fees free
- 4 days practical, 1 day theory
- A pathway to further study and a rewarding farming career

Contact us on **0508 TRAIN ME** (872 466)

# **Attention Careers Advisors**

## **‘Taster Days’**

**Wondering what to do with YR 9 & Yr 10’s in the last week of school?**

Why not try some ‘Taster Days’ with our trained staff to experience farm life? We can tailor a programme to suit your needs from 1-3 day courses covering general farm skills from fencing, livestock handling and quad bike’s.

**Check out our website [www.landbasedtraining.co.nz](http://www.landbasedtraining.co.nz)**

This will give you more information on what we have to offer

Not seen what you need? Then phone us and see if we can help

## **Farm School Visits**

There is more to our farm training schools than meets the eye. If you wish to bring a group of students to our training schools prior to the open days, please contact our office to arrange a date

0508 TRAINME (872 466)